



# MONTHLY MEMBERSHIP PROGRESS REPORT

District 201V14

Results as of: 04/30/2018

GMT: ANN ELDRIDGE

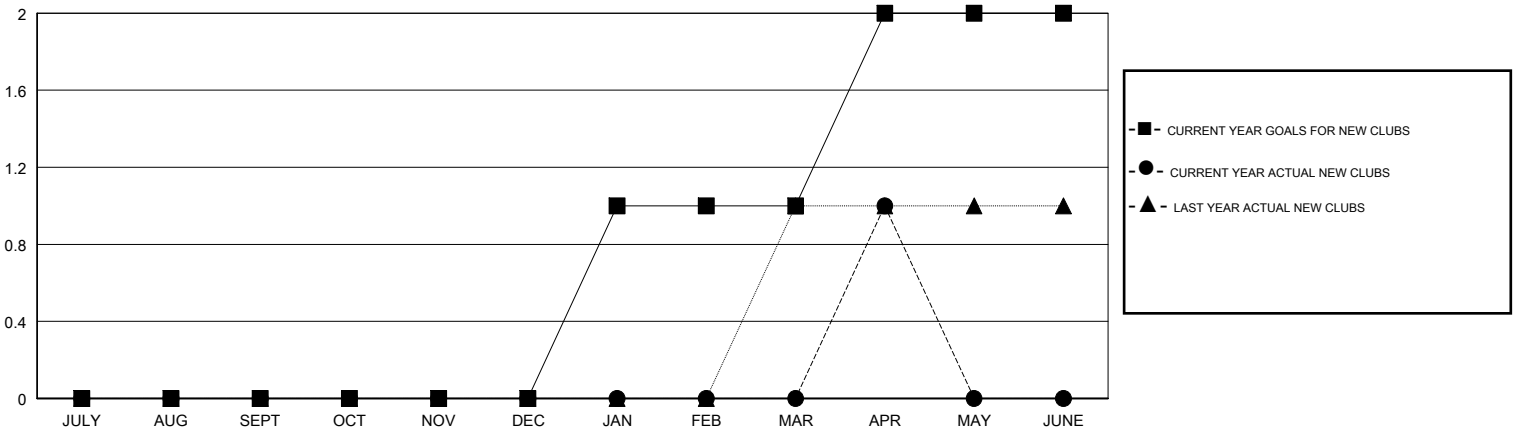
LOCATION AUSTRALIA

GMT CA

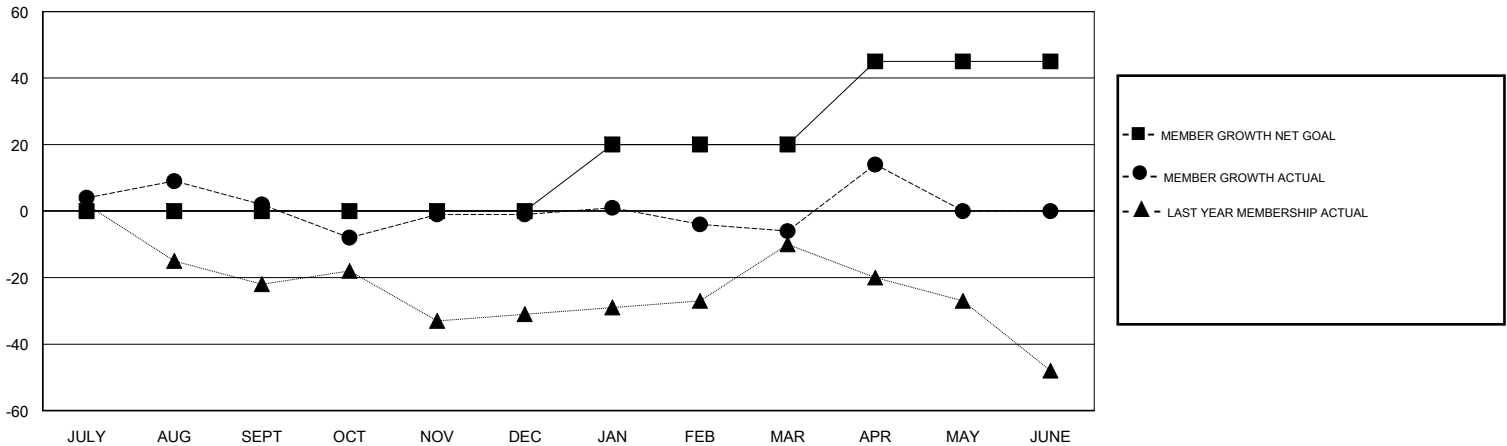
Clubs			
RESULTS FOR 2017-2018			
QUARTER	NEW CLUB GOAL	NEW CLUBS	DROPPED CLUBS
JULY/AUG/SEPT	0	0	0
OCT/NOV/DEC	0	0	0
JAN/FEB/MAR	1	0	0
APR/MAY/JUNE	1	1	0

Members			
RESULTS FOR 2017-2018			
QUARTER	MEMBER GROWTH NET GOAL	MEMBER GROWTH ACTUAL	DROPPED MEMBERS ACTUAL (including transfers)
JULY/AUG/SEPT	0	48	41
OCT/NOV/DEC	0	31	29
JAN/FEB/MAR	20	44	44
APR/MAY/JUNE	25	34	12

GOALS AND ACTUAL NEW CLUBS CUMULATIVE



GOALS AND ACTUAL MEMBERS CUMULATIVE



DROPPED CLUBS: 0	40 CLUBS OF 74 ADDED 1 OR MORE NEW MEMBERS	<u>GENDER DISTRIBUTION</u> MALE 1,006 (71.60%) FEMALE 399 (28.40%) Women Percentage Fiscal Year Goal: 37%
<u>DROPPED MEMBERS</u> DECEASED 16 CLUB CANCELLED 0 OTHER 110 TOTAL 126	<a href="#">CLICK HERE FOR CUMULATIVE MEMBERSHIP DATA</a>	TOTAL FAMILY UNIT MEMBERS 174 FAMILY MEMBERS PAYING HALF DUES 90